

EVENT GUIDE

# HALLOWEEN HORROR NIGHTS®

at Universal's  
Islands of Adventure®

# 13



THE DIRECTOR  
WILL SEE YOU NOW.



# PARK INFORMATION

## GUEST SERVICES

Located, as you enter, to the right side of the Main Entrance. Guest Services offers:

- + Information for Guests with Disabilities
- + Lost & Found services
- + Lost person assistance

## FIRST AID

*Sponsored by Walgreens*

Located at Immortal Island in Sindbad's Village. Look for the Red Cross across from the Oasis Coolers building.

## FOR YOUR SAFETY

- + Shoes and shirts must be worn at all times.
- + You must secure all loose articles (sunglasses, cameras, hats) in the lockers provided adjacent to the Incredible Hulk Coaster and Dueling Dragons roller coasters or leave them with a non-rider. You may not leave them at the loading area or carry them with you onto the ride.
- + Smoking is not allowed inside any attraction or waiting area.

Please note height and health requirements posted at each attraction entrance, and any loading information posted near ride loading areas. Children under 48 inches must be accompanied by an adult and must be able to sit upright unassisted on all rides.

## While Riding:

Guests should remain seated at all times, keeping hands and feet inside the ride vehicle. Children should be supervised.

## EXPECTANT MOTHERS

Due to the nature of the attractions, expectant mothers are requested to avoid riding the **Incredible Hulk Coaster**, **The Amazing Adventures of Spider-Man**, **Doctor Doom's Fearfall**, **Dudley Do-Right's Ripsaw Falls**, **Popeye & Bluto's Bilge-Rat Barges**, **Jurassic Park River Adventure**, **Flying Unicorn**, **Dueling Dragons** and **The Cat in the Hat**. We have provided comfortable areas where you can wait for your party to ride.

## GUESTS WITH DISABILITIES

Many attractions maintain safety admission requirements for guests with disabilities and guests with service animals. Please consult the Rider's Guide for Safety and Guests with Disabilities available from Guest Services, or ask any attraction attendant for further information. We apologize, but motorized wheelchairs and electric convenience vehicles (ECV's) are not permitted on any ride vehicles.

## CHILD SWAP

Parties with a small child may take advantage of our Child Swap program. This allows one member of a party to watch over the child while the rest of the party waits, rides, then swaps places so that they may enjoy the ride as well. See any ride attendant for further information.

## SMOKING AREAS

Smoking is permitted only in the areas designated by this symbol on the map.



**Failure to follow posted guidelines may result in serious injury or expulsion from the park.**

ROLLER COASTERS OPEN DURING SELECT OPERATING HOURS.

RELIVE THE NIGHTMARE  
AGAIN AND AGAIN AND AGAIN...



FREQUENT  
FEAR  
PASS ONLY  
\$21.95  
+TAX

*With tonight's paid admission!*

Return to Halloween Horror Nights® as many times as you dare every Sunday through Thursday night – for one shockingly low price!

Pass valid October 5, 12, 15, 16, 19, 22, 23, 26, 28, 29, 30

Visit Vacation Services located to the right of the exit turnstiles *before you leave the park* to get your Pass.

Limit one Pass per person. Valid photo ID must be presented along with Pass upon return to Halloween Horror Nights. Offer subject to change without notice. Restrictions may apply.



## FREE ADMISSION!

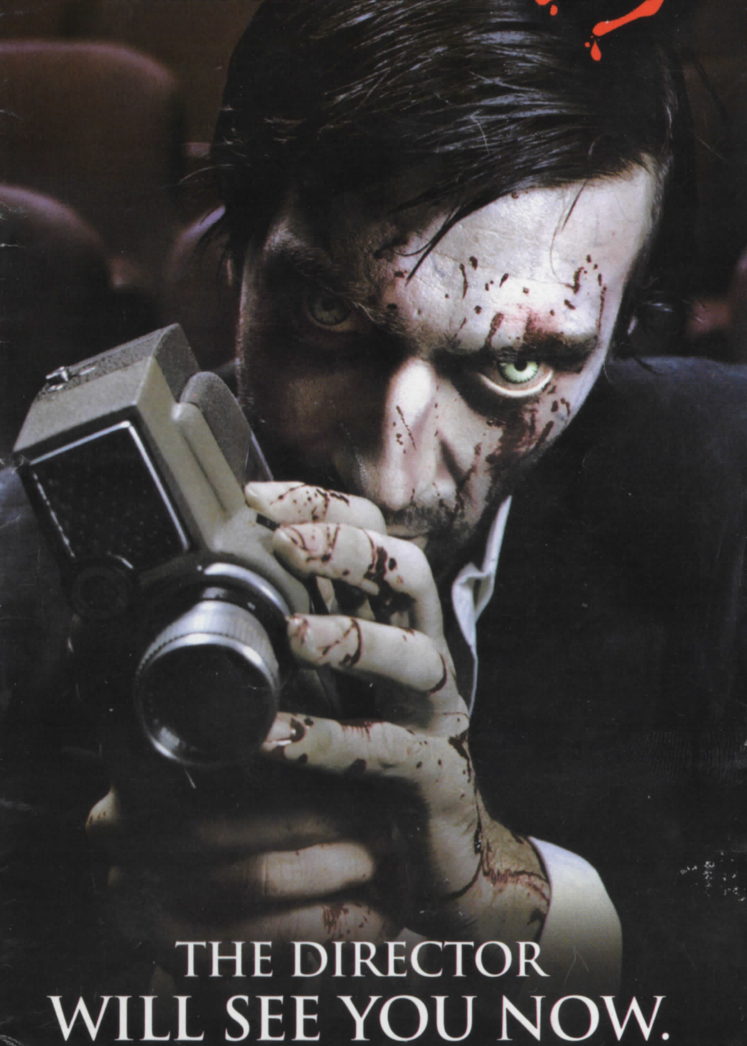
Present this Event Guide (or your Halloween Horror Nights® ticket stub) at select CityWalk® clubs\* **TONIGHT** for free admission for you and a guest.

\*Not valid for separately ticketed concerts and special events. Some venues require 21 or older for admission. You must be 21 to consume alcohol. Proof of age required. Valid only on Halloween Horror Nights event evenings. Does not include admission to Universal Cineplex. Not valid at Bob Marley—A Tribute to Freedom on Saturday nights. Subject to availability. Restrictions apply.

See ATTRACTION & SHOW TIMES for operating hours.

# EVENT GUIDE HALLOWEEN HORROR NIGHTS® 13

at Universal's  
Islands of Adventure®



THE DIRECTOR  
WILL SEE YOU NOW.



# HALLOWEEN HORROR NIGHTS<sup>®</sup> 13

Universal's Islands of Adventure

Meet the Director...a demented filmmaker who doesn't believe in fake blood or stunt doubles. The screams he captures on film are real. And whether you realize it or not, you've just been cast in his next picture.



## Don't Stand in Line Like a Zombie

Scream right past the regular lines with **Halloween Horror Nights Express**. You'll enjoy one admission to the Express entrance at select Halloween venues and attractions. Don't get caught dead without it!

ON SALE NOW at the **Halloween Horror Nights Express** Kiosk and the following merchandise locations: Port Merchant Cart, The Marvel Alterniverse Store<sup>®</sup>, Dinostore<sup>SM</sup>, Toon Extra<sup>®</sup>, and The Dragon's Keep<sup>SM</sup>; as well as Vacation Services, Guest Services and Rental Services.

\*Paid Halloween Horror Nights event admission required. Valid one time per each house, ride and attraction (Bill & Ted FIRST show only) for date on ticket only. Some attractions may be excluded. Passes subject to availability and hours of distribution are limited. Non-refundable, non-transferable. Additional restrictions may apply.

## DINING



### CAFE 4<sup>SM</sup> - TOXIC CITY

Scare up an appetite with a potentially hazardous **Pizza**, bloody **Meatball Sub**, **Caesar Salad** and **Devil's Food Cake**.

### COMIC STRIP CAFE<sup>®</sup> - HIDE & SHRIEEK!

Drop in and dine on one of our devilishly delicious dishes such as **Pizza**, **Chicken Fingers**, **Tacos**, **Sweet and Sour Chicken**, **Caesar Salad** and **Desserts**.

### ENCHANTED OAK TAVERN<sup>®</sup>

#### IMMORTAL ISLAND

Sink your fangs into a juicy **Turkey Leg**, **Rib Platter** or **Burger Platter** and "bite" into an **Apple Pie**. Full bar available.

### CIRCUS MCGURKUS CAFE STOO-PENDOUS<sup>TM</sup> BOO-VILLE

Feed your fright with our **Fried Chicken Platter** or **Pizza**. Be sure to leave room for one of our tasty **Cookies**. Featuring a Midnight Breakfast buffet on 2:00am closing nights. **Barnie's Coffee bar** also available.

### CONFISCO GRILLE<sup>®</sup> - PORT OF EVIL

Too afraid of the dark? Sit down, relax and enjoy a peaceful full-service casual dining experience featuring delicious **Nachos & Buffalo Wings**, mouth watering **Char-Grilled Hamburgers** and cool crisp **Salads**. Full bar available.

Other dining options include: **CINNABON<sup>®</sup>** in *Port of Evil*; **CAPTAIN AMERICA DINER<sup>®</sup>\* in *Toxic City*; **WIMPY'S** in *Hide & Shrieeck*; **PIZZA PREDATORIA<sup>®</sup>** and **THE BURGER DIGS<sup>®</sup>** in *Night Prey*, **Barnie's Coffee** and **FIRE-EATER'S GRILL<sup>SM</sup>** at *Immortal Island*. In addition, food and beverage carts will be located in each island.**

Enjoy beer, soda, mixed drinks and other "spirits" including our featured drink "*Feelin' Lucky Elixir*", featuring *Cruzan Pineapple* and *Vanilla Rum* at our **Final Cut Bars** which you'll find throughout the park.

*\*Select nights only.*

**One drink per ID. We reserve the right to ID all alcohol beverage sales.**

**All alcohol sales stop 30 minutes prior to park close.**

## SHOPPING



For some **Sweet Halloween Treats** creep into:

**ISLAND MARKET & EXPORT<sup>®</sup>**  
in **PORT OF EVIL** and

**SNOOKERS AND SNOOKERS SWEET CANDY COOKERS** in **BOO-VILLE**

Purchase an exclusive Halloween Horror Nights 13 t-shirt & other merchandise available at the following locations:

ISLANDS OF  
ADVENTURE  
TRADING COMPANY<sup>SM</sup>

GASOLINE ALLEY

TOON EXTRA<sup>SM</sup>

PORT PROVISIONS<sup>®</sup>

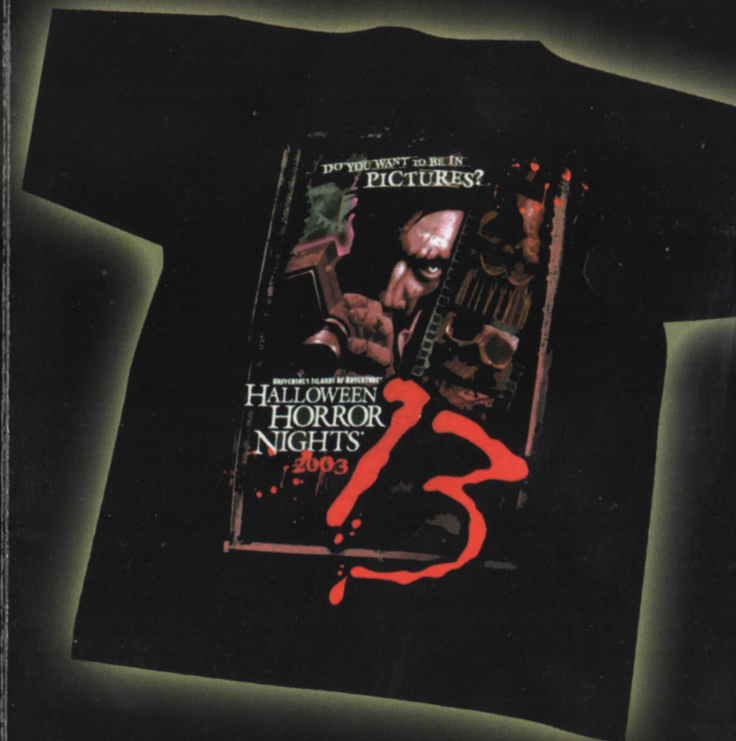
SPIDER-MAN SHOP

THE DRAGONS' KEEP<sup>SM</sup>

CATS, HATS & THINGS<sup>\*</sup>

JURASSIC OUTFITTERS<sup>®</sup>

*\*Select nights only.*



Schedules subject to change, delay or cancellation due to inclement weather. In the event of lightning within close proximity to the park we will, for the safety of our guests, close most outdoor attractions. Shows close when theatres fill or performances begin.

**SORRY, NO COSTUMES ALLOWED. THIS EVENT MAY BE TOO INTENSE FOR YOUNG CHILDREN.**

Marvel Super Hero character names & likenesses: TM & © 2003 Marvel © 2003 Universal Studios. Jurassic Park, Jurassic Park River Adventure ® Universal Studios/Amblin. Dr. Seuss properties TM & © 2003 Dr. Seuss Enterprises, L.P. All rights reserved. Rocky and Bullwinkle and Friends TM & © Ward Prods. All Popeye characters TM & © 2003 KFS, Inc. TM Hearst Holdings, Inc. Cinnabon ® Cinnabon, Inc. Universal elements and all related indicia TM & © 2003 Universal Studios. © 2003 Universal Orlando. All rights reserved. 231788/0903/CS



## SIX ALL NEW HAUNTED HOUSES

See ATTRACTION & SHOW TIMES for schedule.

### 1 SCREAMHOUSE REVISITED

Something is drawing you back to this haunted Victorian manor, where ghostly apparitions and gory corpses try to make sure you never leave again.

### 2 ALL NITE DrivE-IN

Enter a deserted drive-in theater that showed nothing but slasher films. Peek behind the screen and you may find yourself on the set of The Director's latest "slashterpiece."

### 3 PSYCHO SCAREAPY

Get ready for a dose of shock treatment as the inmates are running the asylum. If you think you have any hope of escaping, you really ARE insane.

### 4 JUNGLE OF DOOM

Face the curse of bloodthirsty zombies after trespassing on the ancient Burial Ground of Lost Souls, where even the pounding of tribal drums can't drown out your screams.

### 5 FUNHOUSE OF FEAR

Nothing is what it seems in this mind-boggling maze of optical delusions and maniacal clowns that will have you running for the exit. Too bad there isn't one.

### 6 SHIP OF SCREAMS

This aging cruise liner was found adrift at sea without a soul on board. Now its decks are roamed by a ghostly crew and passengers. Will you be joining them?

## ALL NEW. ALL LIVE.

### 7 BILL & TED'S EXCELLENT HALLOWEEN ADVENTURE

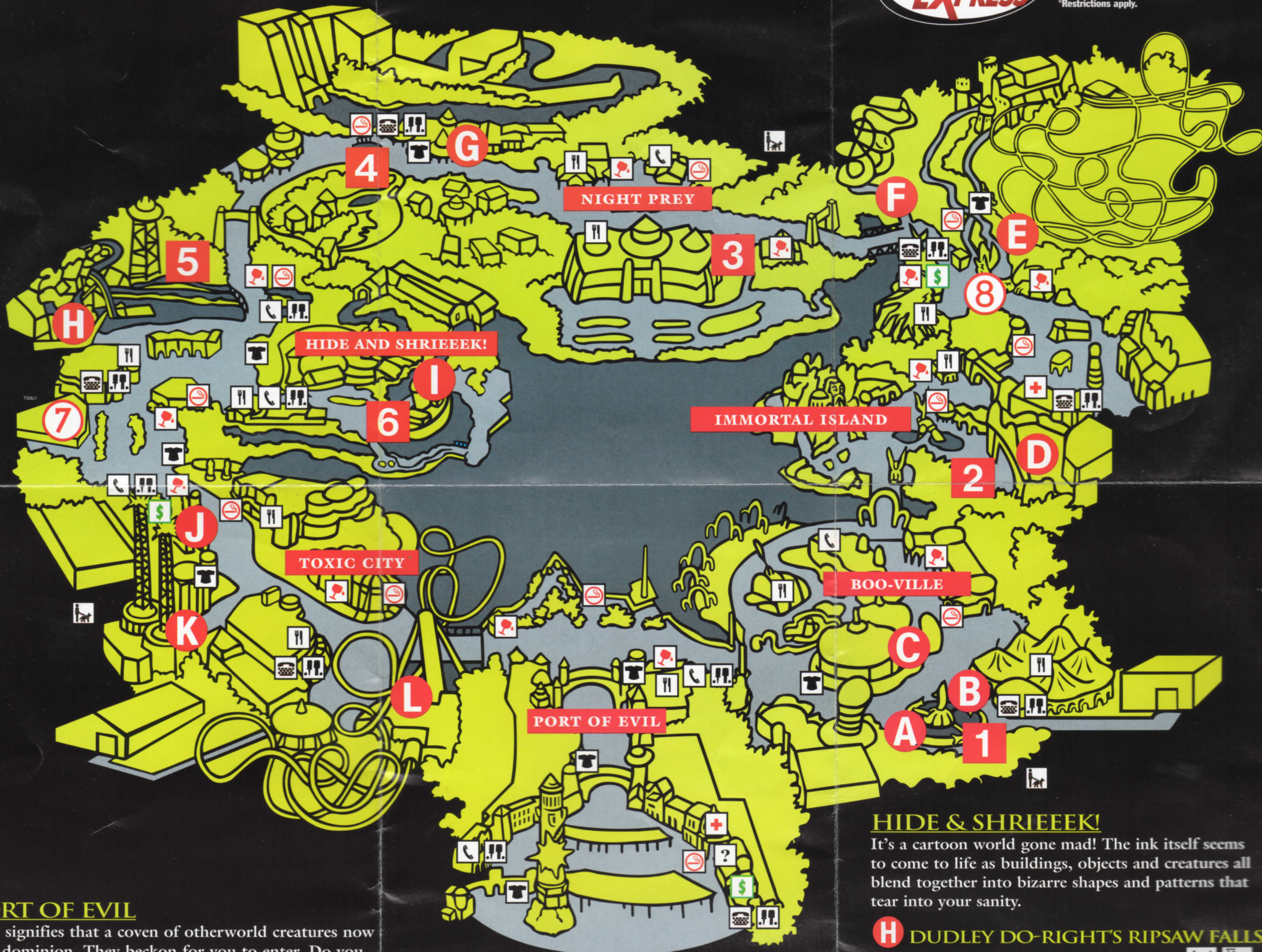
Party on as those two time traveling dudes are back in a most triumphant new adventure featuring your favorite TV and movie characters. See ATTRACTION & SHOW TIMES for schedule.

### 8 INFESTSTATION

Here's your chance to "audition" for The Director's latest film, as you get to interact with a host of creepy, crawly co-stars. Must be 18 or older.



Scream right past the regular lines\* with Halloween Horror Nights Express. ON SALE NOW! \*Restrictions apply.



### PORT OF EVIL

"13" signifies that a coven of otherworld creatures now hold dominion. They beckon for you to enter. Do you dare venture onward, deeper into the abyss?

### BOO-VILLE

All the Whos are behind locked doors. As darkness falls, the mischievous spirit of Halloween descends upon the deserted streets. Does it bring treats... or tricks?

### A THE CAT IN THE HAT™

### B ONE FISH, TWO FISH, RED FISH, BLUE FISH™

### C CARO-SEUSS-EL™

### IMMORTAL ISLAND

From the bitter wasteland of the Ice Demon to the charred inferno of the Fire Demon, you're trapped in the midst of a titanic battle where no matter who wins, YOU LOSE.

### D POSEIDON'S FURY®

### E DUELING DRAGONS®

See ATTRACTION & SHOW TIMES for operating hours.

### F THE FLYING UNICORN®

### NIGHT PREY

Stranded on a volcanic tropical island, there's nowhere to run as you're stalked through the jungle by weird, beastly creatures who seem to possess a terrifying intelligence.

### G JURASSIC PARK RIVER ADVENTURE®

### HIDE & SHRIEEEK!

It's a cartoon world gone mad! The ink itself seems to come to life as buildings, objects and creatures all blend together into bizarre shapes and patterns that tear into your sanity.

### H DUDLEY DO-RIGHT'S RPSAW FALLS®

### I POPEYE & BLUTO'S BILGE-RAT BARGES®

### TOXIC CITY

You've broken quarantine and entered a city plunged into a biohazard nightmare. Toxic waste spews everywhere, as the streets are filled with packs of mutated, melting monsters.

### J THE AMAZING ADVENTURES OF SPIDER-MAN®

### K DOCTOR DOOM'S FEARFALL®

### L INCREDIBLE HULK COASTER®

See ATTRACTION & SHOW TIMES for operating hours.

### M STORM FORCE ACCELATRON®